



Pearson Engineering, LLC

Pearson Engineering is a nationally acclaimed engineering firm with a personal touch, founded in 1986 when Richard Pearson returned to his hometown to offer his brand of problem-solving consulting services. In 2008, the company ownership transferred to Brian Basken and Jeremy Bartell.

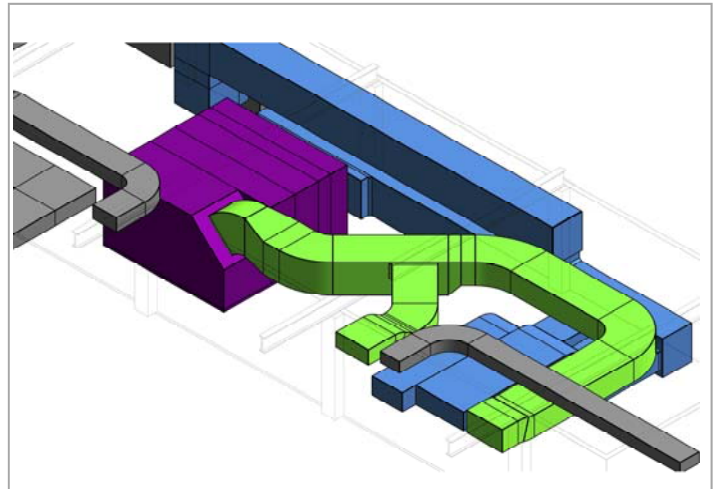
With decades of experience in completing ambitious HVAC design and retrofit projects, we make a very clear promise: We'll apply our unique way of thinking to create cutting-edge, cost-effective solutions for you, and we'll treat your needs as our top priority. We'll look for answers that focus on energy efficiency, save you money and add value to your organization. Together we'll build a partnership based on trust, service excellence, and proven results. Our track record of engineering innovation and impeccable customer satisfaction speaks for itself.

While our projects are of a grand scale, our company is small by design. Our experienced professionals provide hands-on involvement from initial analysis to follow-up service. At Pearson Engineering, the person you hire is the person who will run your project.



Services Offered

- Design
- Retrofit Projects
- System Analysis
- Energy Management
- Energy Audits
- System Commissioning and Retro Commissioning
- Building Automation System Development
- Master Planning



Our Clients



Aurora Health Care
Briggs & Stratton Corp.
CUNA Mutual Group
Essentia Health
Fiore Companies
Froedtert Health
Honeywell Building Solutions
House of Blues
Illinois School Districts 25, 200, 300
Lillibridge Healthcare Services, Inc.
Lincoln County Courthouse
Madison College

Northwestern Mutual Life Insurance
and Financial Services
Northwestern University
Oconomowoc Memorial Hospital
Overture Center
Plastic Ingenuity
ProHealth Care
SEDAC / 360 Energy Group
Tribune Company
Waukesha Memorial Hospital
WPS Health Insurance

HVAC Professional Team

Brian J. Basken, President, PE, LEED AP, QCx
University of Wisconsin-Madison, BSME
Joined Pearson Engineering in 1998

Jeremy R. Bartell, Principal, PE, QCx
University of Wisconsin-Madison, BSME
Joined Pearson Engineering in 2005

Jason R. Beren, PE, LEED AP
University of Wisconsin-Madison, BSME
Joined Pearson Engineering in 2010

Kyle Halverson, EIT
University of Wisconsin-Madison, BSME
Joined Pearson Engineering in 2011

Phil Galloni, PE, LEED AP, QCx
University of Wisconsin-Madison, BSME
Joined Pearson Engineering in 2009

Dan White, HVAC Designer
Davis & Elkins College, Elkins WV, BFA
Joined Pearson Engineering in 2009

Anne Meyer, Administrator
Joined Pearson Engineering in 2005

Professional Registrations in Wisconsin, Illinois, Iowa, Minnesota, Missouri, and Texas

Innovative Solutions

